



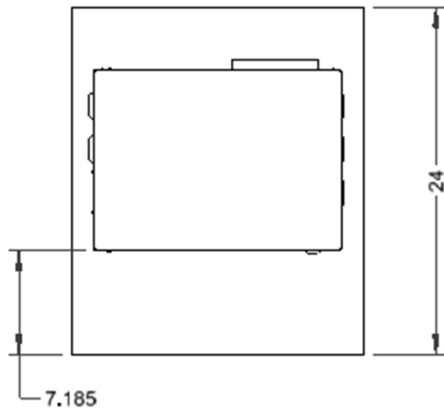
**Models: 8685-3100A, 8685-3100A-1, 8685-3100A-2, 8685-3100A-3, 8685-3100A-4 & 8685-3100A-6**

Specifications	PAGE	2
Form Assembly & Preparation (General)	PAGE	3-4
<hr/>		
8685-3100A Installation	PAGE	5-7
8685-2GVR or 8685-2GWVR Installed to 8685-3100A	PAGE	8
<hr/>		
8685-3100A-1 Installation	PAGE	9-11
8685-2GVR-1 or 8685-2GWVR-1 Installed to 8685-3100A-1	PAGE	12
<hr/>		
8685-3100A-2 Installation	PAGE	13-15
STD 2 Door or Air Vac Series Vault ready Installed on 8685-3100A-2	PAGE	16
<hr/>		
8685-3100A-3 Installation	PAGE	17-19
29K Series Vault Ready Installed on 8685-3100A-3	PAGE	20
<hr/>		
8685-3100A-4 Installation	PAGE	21-23
STD 2 Door Long Box Series Installed on 8685-3100A-4	PAGE	24
<hr/>		
8685-3100A-6 Installation	PAGE	25-26
8900 Series Vault Ready Installed on 8685-3100A-6	PAGE	27

## Specifications

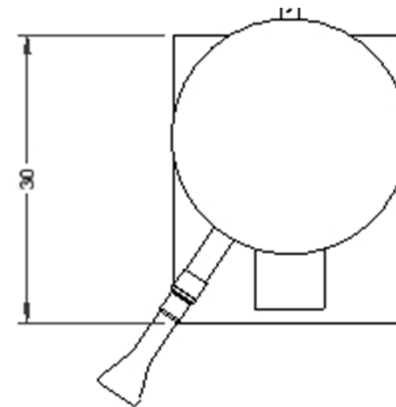
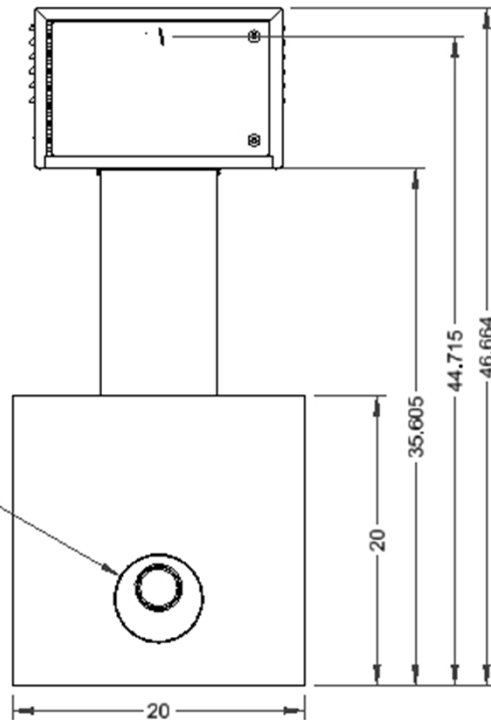
Estimated number of  
80lb bags of ready to mix  
concrete needed to fill  
forms.

Air machine: 13 bags  
Vacuums: 20 bags

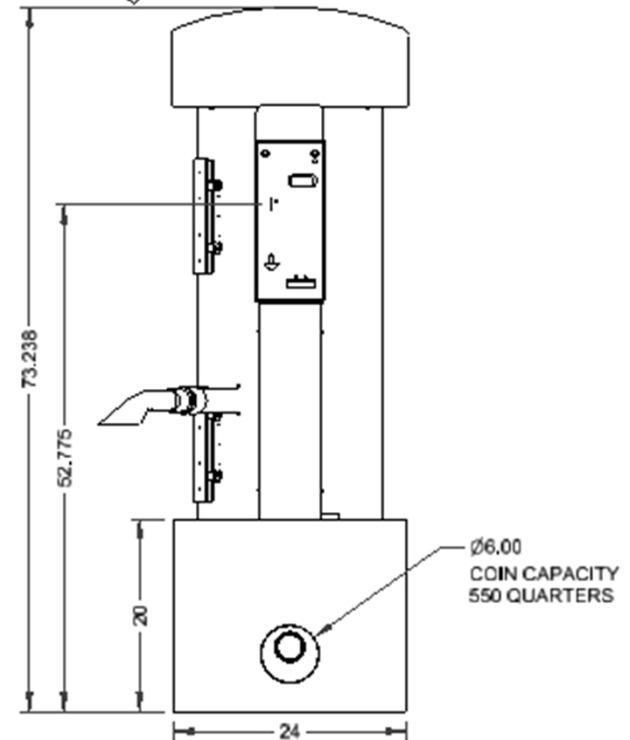


AIR MACHINE

Ø6.00  
COIN CAPACITY  
550 QUARTERS

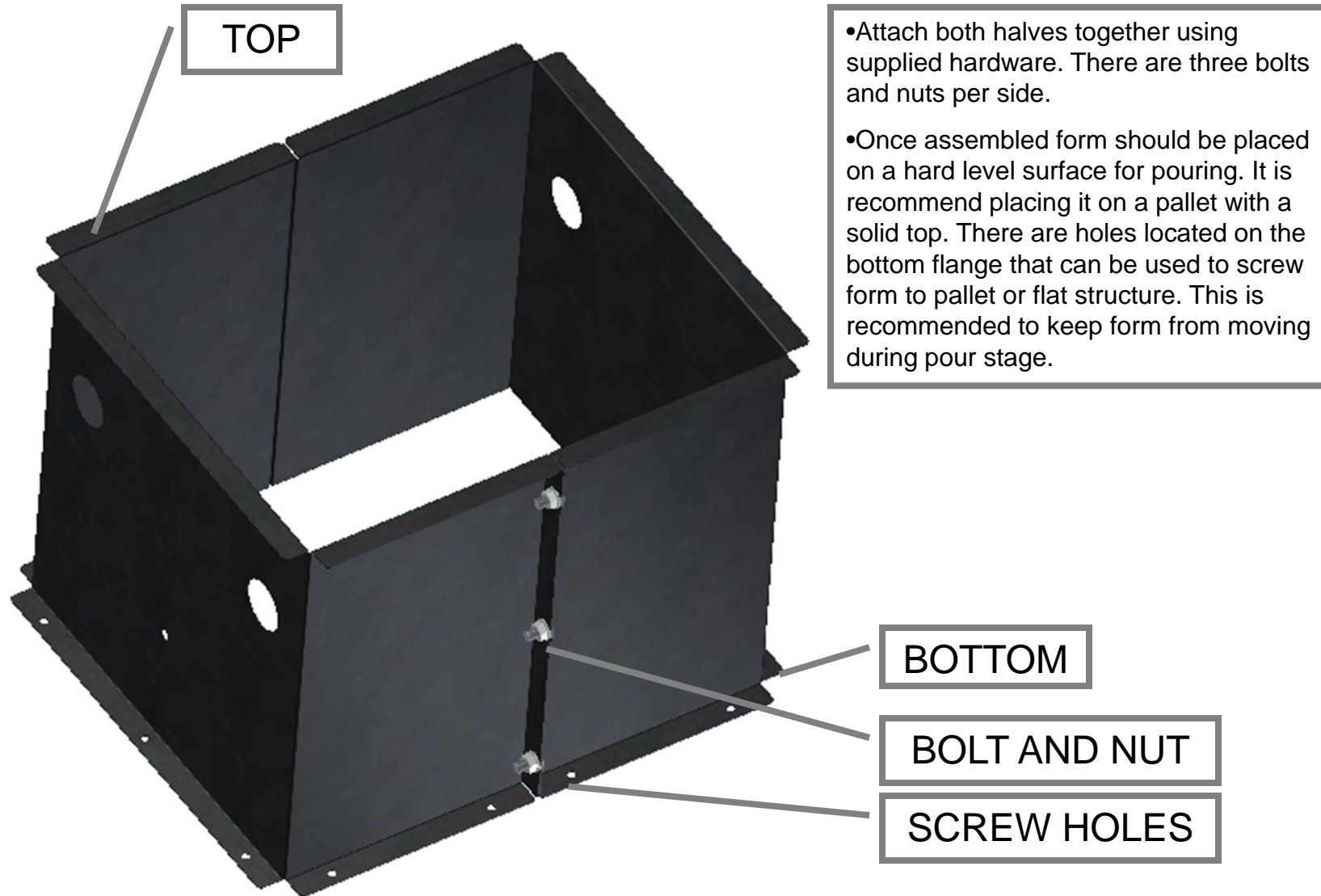


VACUUM



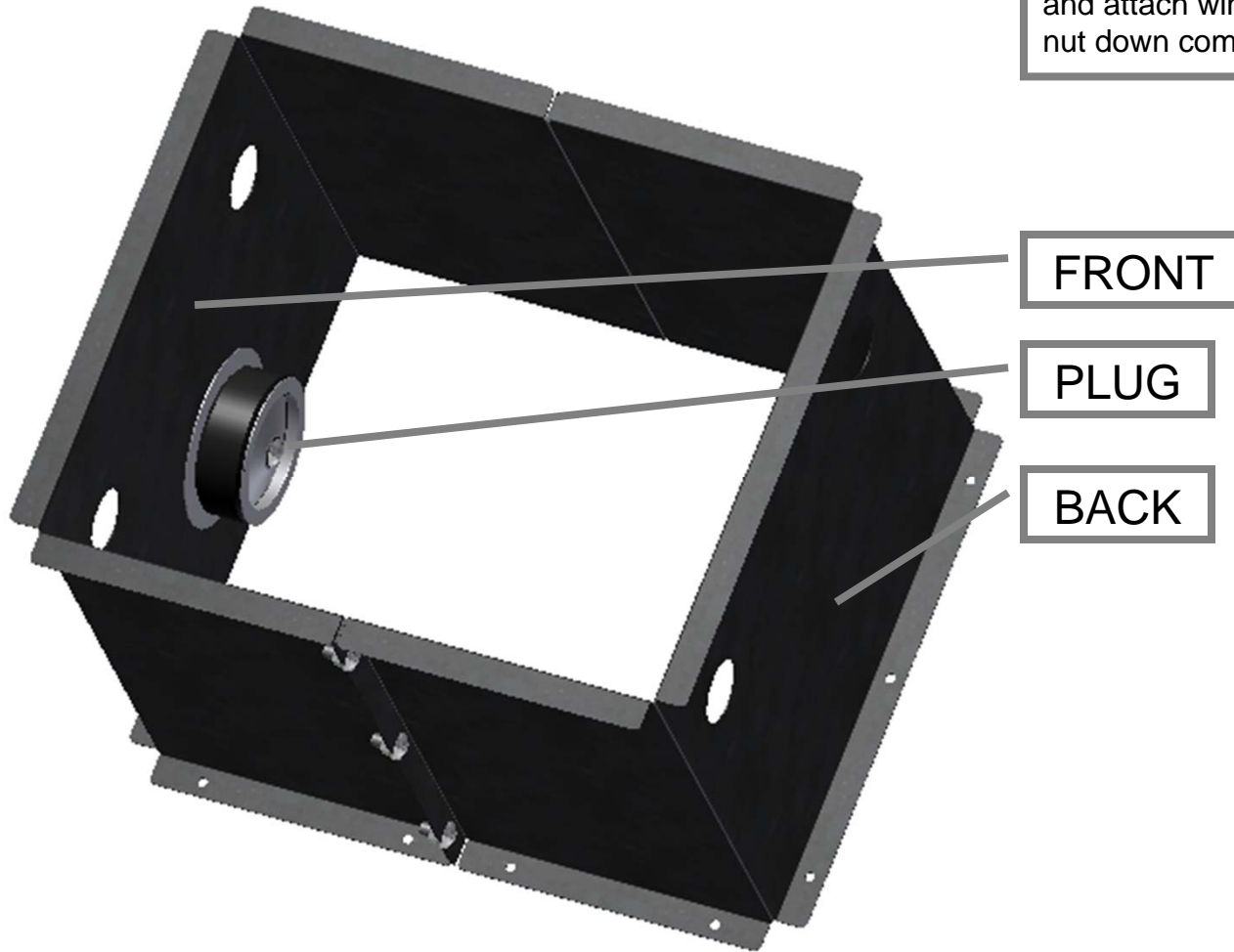
Ø6.00  
COIN CAPACITY  
550 QUARTERS

## 8685 FORM ASSEMBLY

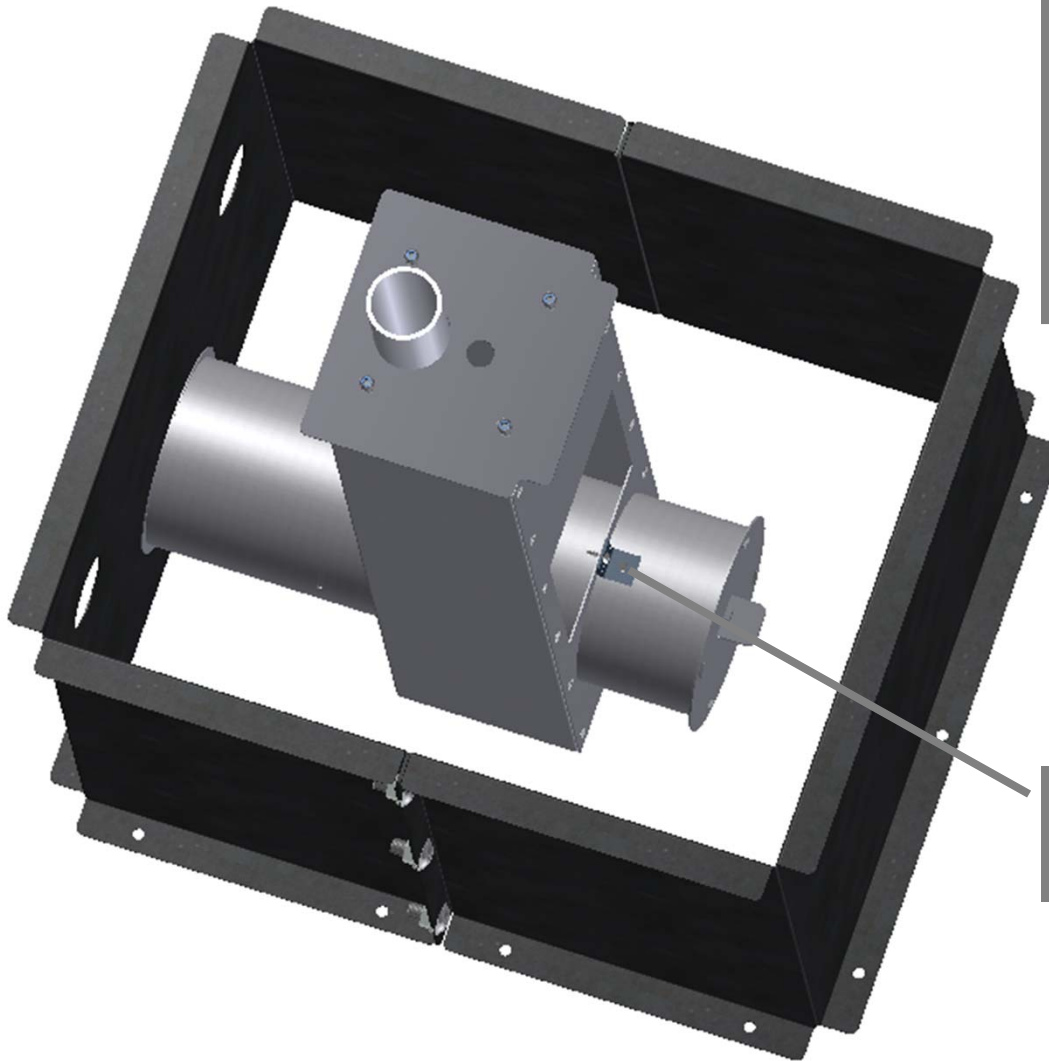


## 8685 FORM ASSEMBLY

- Insert plug into hole on front side of form and attach wing nut. Do not tighten wing nut down completely at this point.



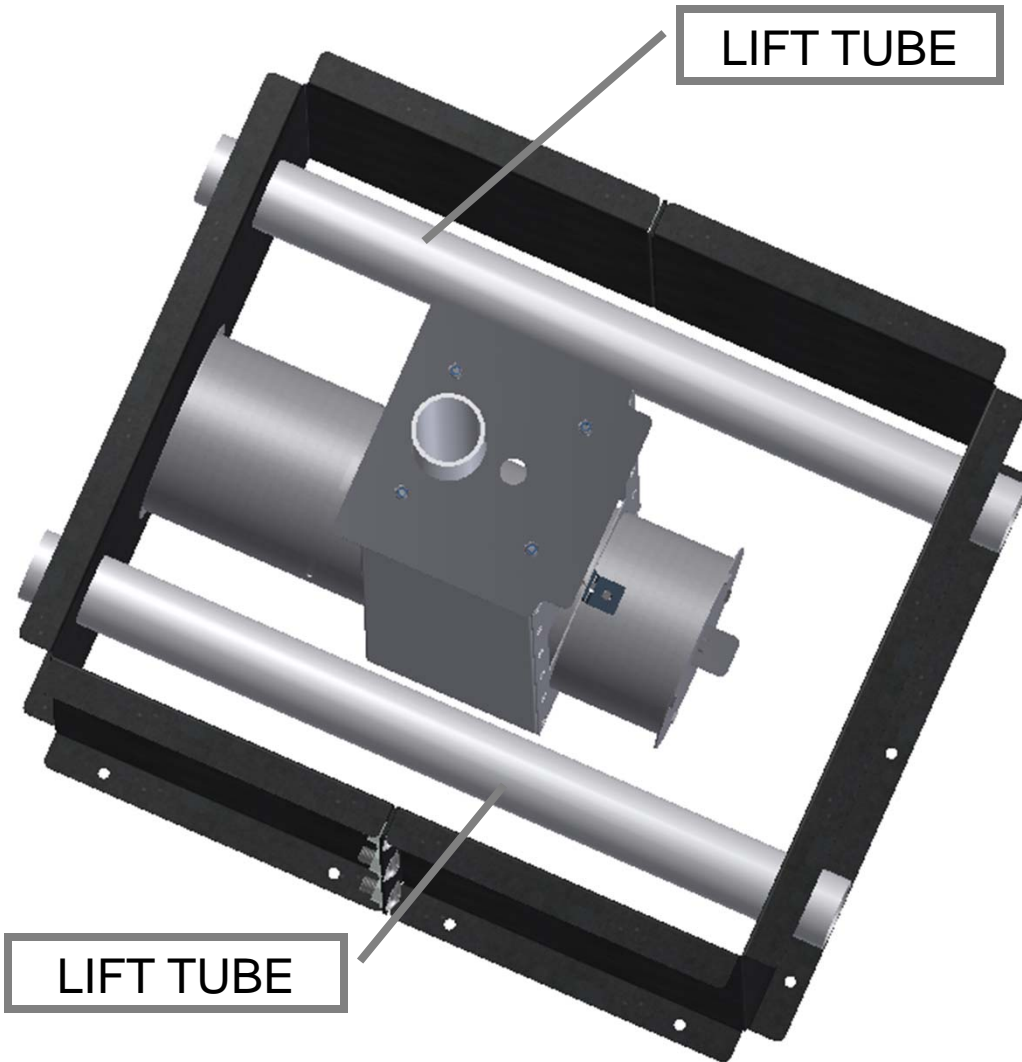
## 8685-3100A INSTALLATION



- Insert vault assembly into form.
- Place opening of vault over plug and press until it mates with form and tighten wing nut on front of form until the vault assembly is sealed and no movement is allowed.

8685-3100A VAULT  
ASSEMBLY

## 8685-3100A INSTALLATION



- Insert lift tubes into holes in form. Make sure there is approximately 2" sticking out each end.

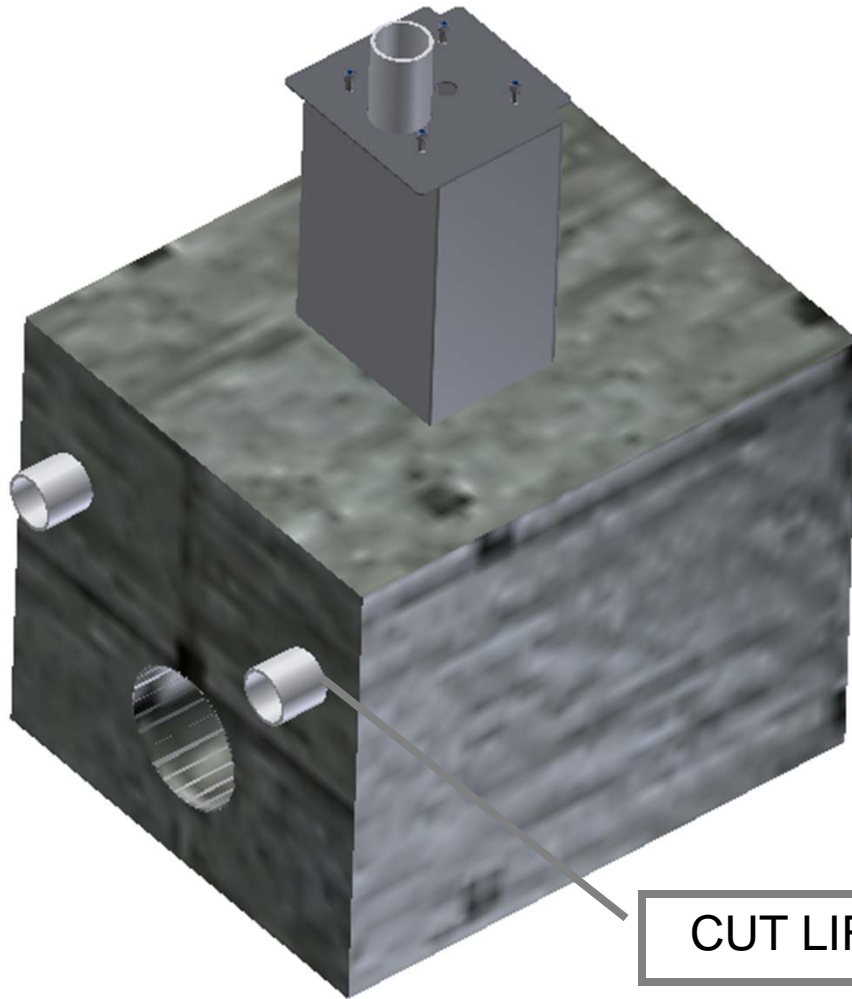
- At this point it is recommended to coat the inside of the form with a light coat of oil. This will aid in keeping the form from sticking to the concrete and allow it to be removed easier.

- Form is now ready for concrete. It is recommend using highway grade mix for best results

- Next pour in concrete and make sure to fill all the crevices with mix. A concrete vibe may also be used to make sure the mix spreads evenly. Do not over vibe or concrete may become to thin.

- Wait 24-48 hours to dry. When dry remove screws from deck and remove bolts from form. Loosen wing nut on front and slide panels off concrete block. Save forms for another pour.

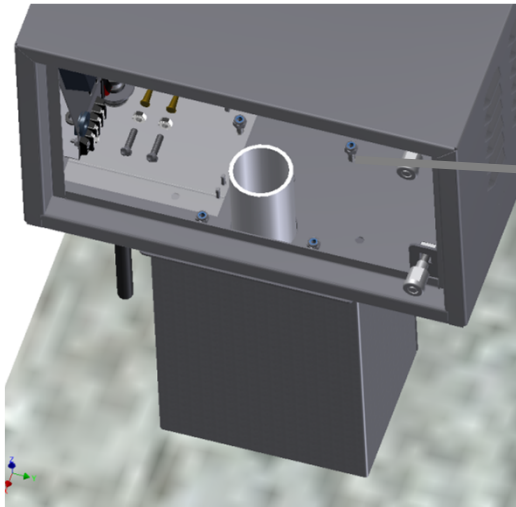
## 8685-3100A INSTALLATION



- Once form is removed the block should look like this.
- Next cut excess off lift tubes to be flush with concrete. (4pl)
- Open up vault door and clean out any water or concrete residue from the inside of vault.

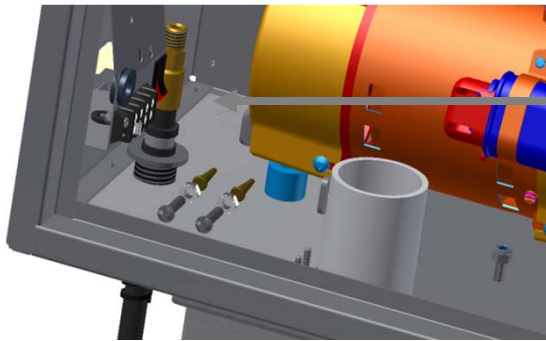
CUT LIFT TUBE FLUSH WITH BLOCK

## 8685-2GVR OR 8685-2GWVR INSTALLED ON PEDESTAL

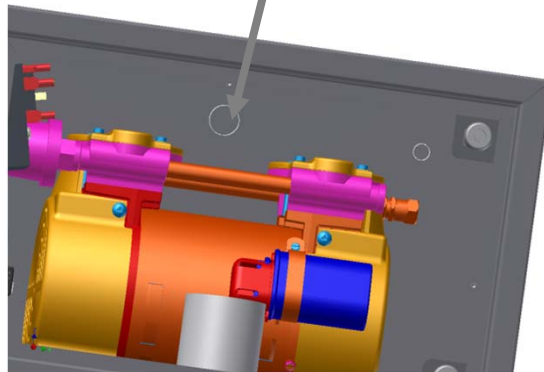


NUT INSTALLED  
(4PL)

- Place machine on top of pedestal and attach lock nuts to fasten cabinet.
- Run electrical to cabinet to either the bottom of cabinet or back of cabinet. There are knockouts in both locations to run conduit to.
- Incoming power then hooks to terminal strip just below timer. See wire diagram in machine manual for exact connection info.



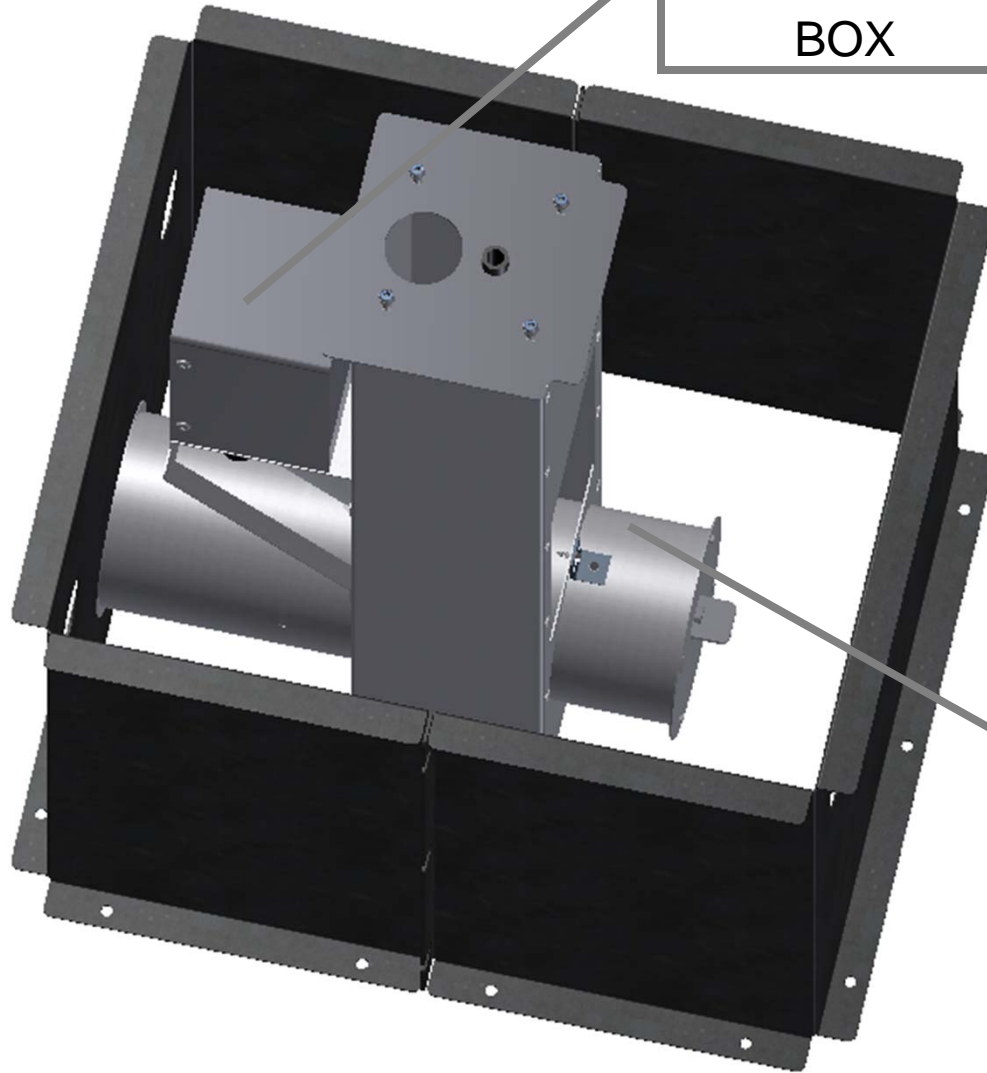
ELECTRICAL TO  
BOTTOM OR BACK





## 8685-3100A-1 INSTALLATION

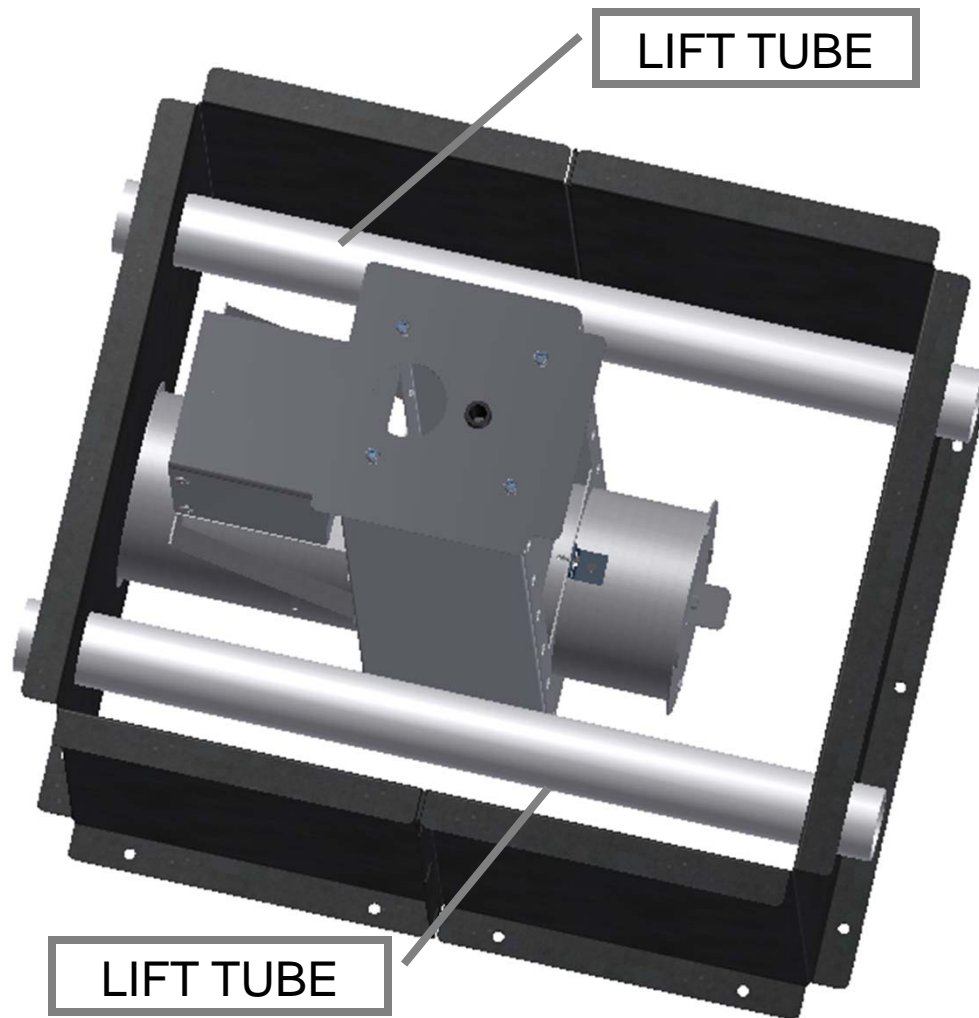
COINMECH  
BOX



- Insert vault assembly into form.
- Place opening of vault over plug and press until it mates with form and tighten wing nut on front of form until the vault assembly is sealed and no movement is allowed.
- Coin mech box can either be mounted as shown during the pour or can be removed but it is generally easier to pour with it not attached.

8685-3100A-1 VAULT  
ASSEMBLY

## 8685-3100A INSTALLATION



- Insert lift tubes into holes in form. Make sure there is approximately 2" sticking out each end.

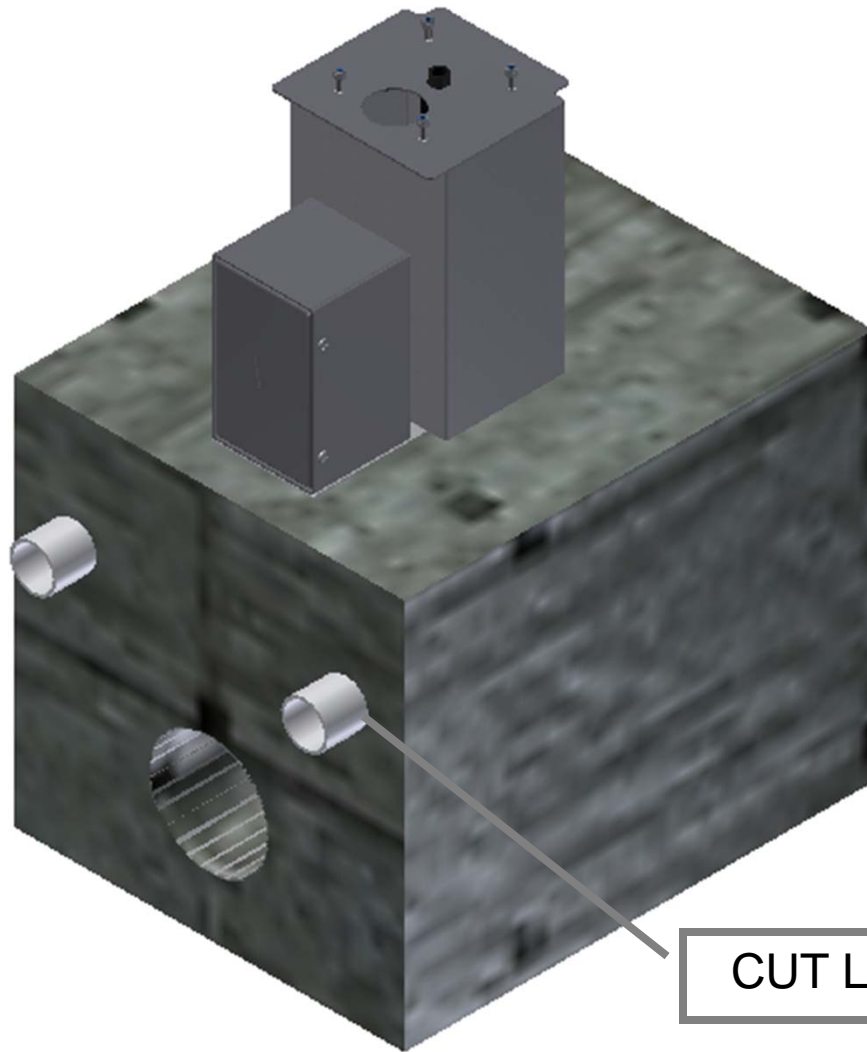
- At this point it is recommended to coat the inside of the form with a light coat of oil. This will aid in keeping the form from sticking to the concrete and allow it to be removed easier.

- Form is now ready for concrete. It is recommend using a highway grade mix for best results.

- Next pour in concrete and make sure to fill all the crevices with mix. A concrete vibe may also be used to make sure the mix spreads evenly. Do not over vibe or concrete may become to thin.

- Wait 24-48 hours to dry. When dry remove screws from deck and remove bolts from form. Loosen wing nut on front and slide panels off concrete block. Save forms for another pour.

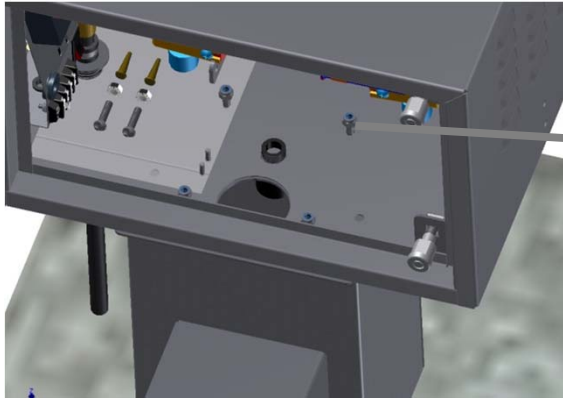
## 8685-3100A-1 INSTALLATION



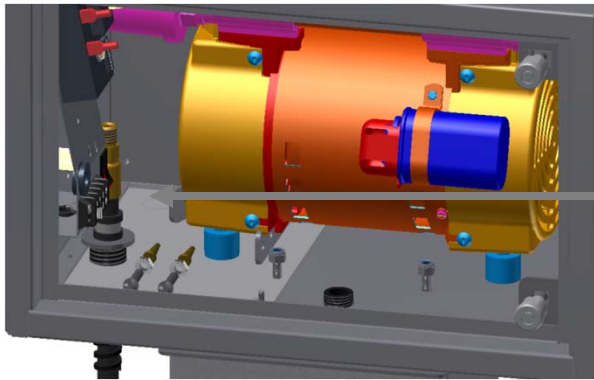
- Once form is removed the block should look like this.
- Next cut excess off lift tubes to be flush with concrete. (4pl)
- Open up vault door and clean out any water or concrete residue from the inside of vault.

CUT LIFT TUBE FLUSH WITH BLOCK

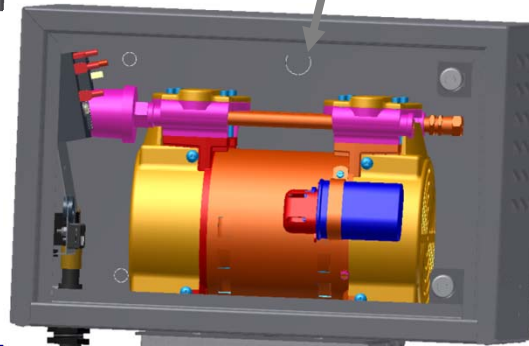
## 8685-2GVR-1 OR 8685-2GWVR-1 INSTALLED ON PEDESTAL



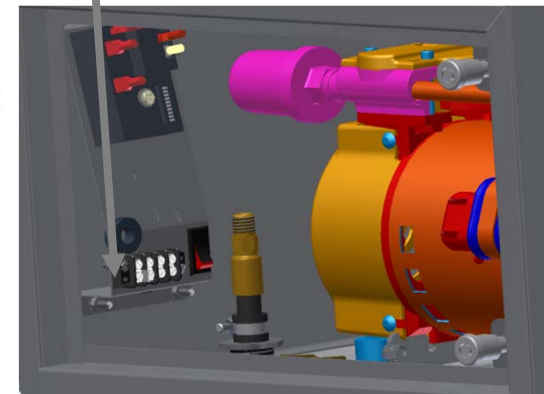
NUT INSTALLED  
(4PL)



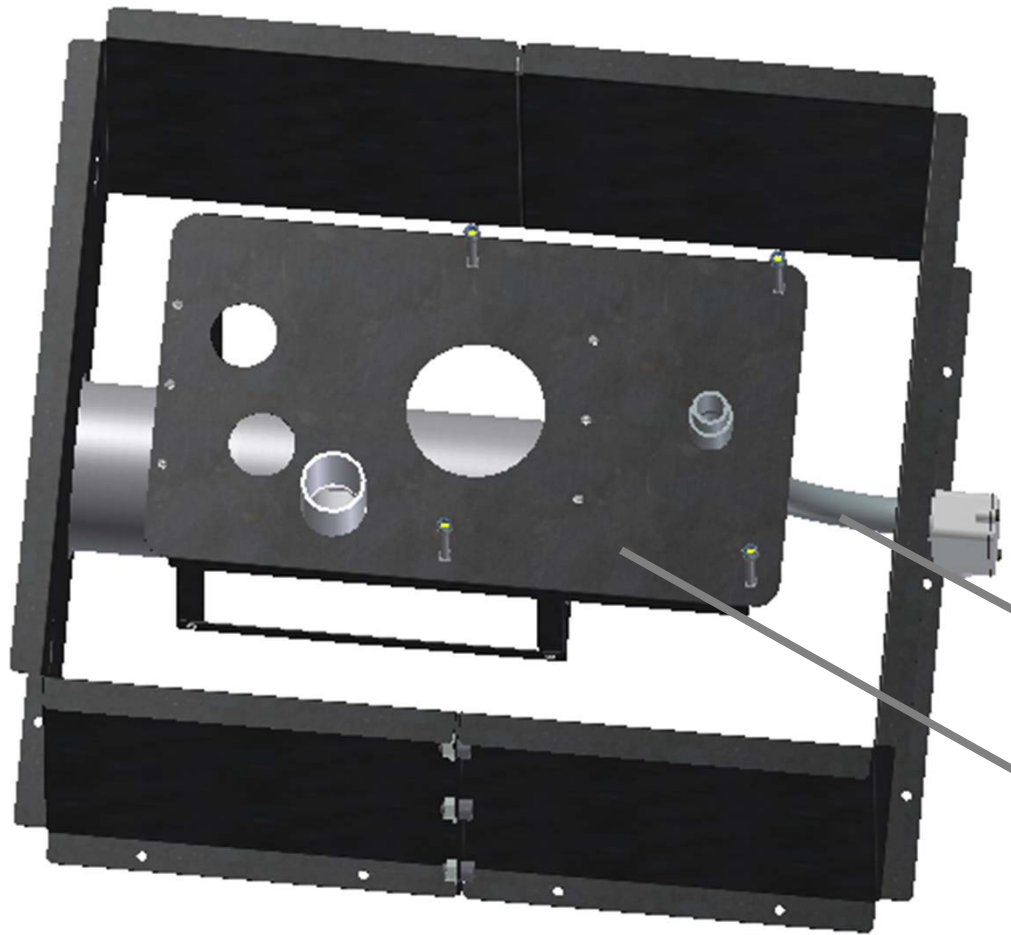
ELECTRICAL TO  
BOTTOM OR BACK



- Place machine on top of pedestal and attach lock nuts to fasten cabinet.
- Run electrical to cabinet to either the bottom of cabinet or back of cabinet. There are knockouts in both locations to run conduit to.
- Connect wires from coin mech box into cabinet to coin location shown on wire diagram in manual.
- Incoming power then hooks to terminal strip just below timer. See wire diagram in machine manual for exact connection info.



## 8685-3100A-2 INSTALLATION

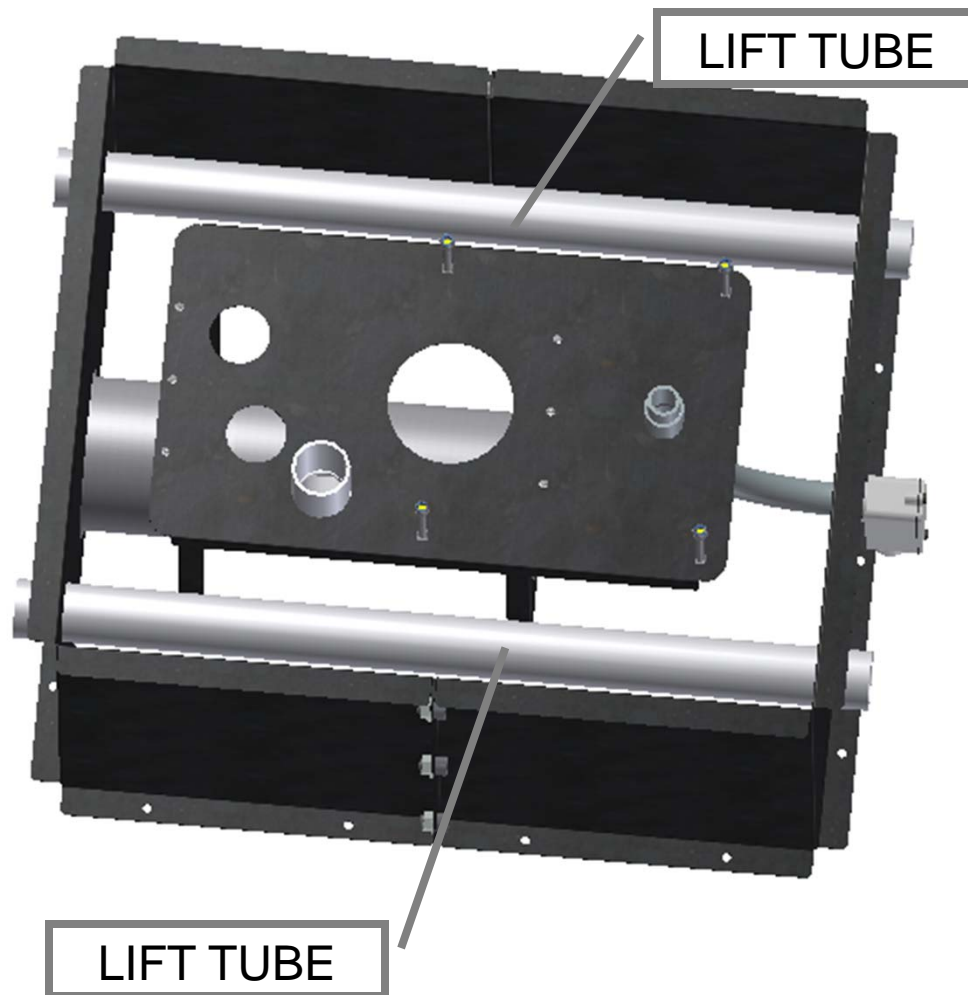


- Insert vault assembly into form.
- Place opening of vault over plug and press until it mates with form and tighten wing nut on front of form until the vault assembly is sealed and no movement is allowed.
- Insert 90 deg electrical conduit into hole in back side of form.

ELECTRICAL CONDUIT

8685-3100A-2 VAULT  
ASSEMBLY

## 8685-3100A-2 INSTALLATION



- Insert lift tubes into holes in form. Make sure there is approximately 2" sticking out each end.

- At this point it is recommended to coat the inside of the form with a light coat of oil. This will aid in keeping the form from sticking to the concrete and allow it to be removed easier.

- Duck tape or close up electrical and vault drop on top plate to prevent concrete from entering.

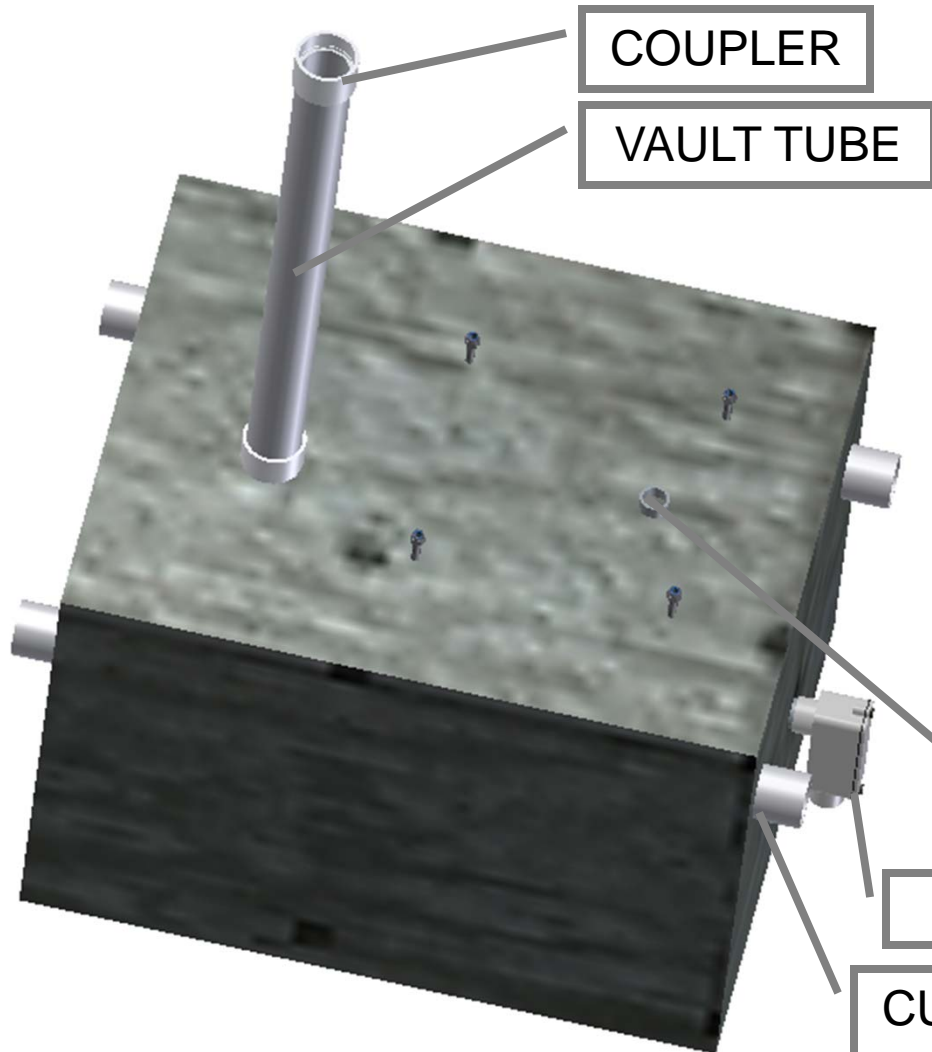
- Form is now ready for concrete. It is recommend using a highway grade mix for best results.

- Next pour in concrete and make sure to fill all the crevices with mix. A concrete vibe may also be used to make sure the mix spreads evenly. Do not over vibe or concrete may become to thin.

- Wait 24-48 hours to dry. When dry remove screws from deck and remove bolts from form. Loosen wing nut on front and slide panels off concrete block. Save forms for another pour.



## 8685-3100A-2 INSTALLATION



COUPLER

VAULT TUBE

- Once form is removed the block should look like this.
- Next cut excess off lift tubes to be flush with concrete. (4pl)
- Open up vault door and clean out any water or concrete residue from the inside of vault.
- Run incoming wire to junction box in back. Run wire thru tube up to top of block.
- Attach vault drop tube and coupler.

TUBE FOR WIRE TO  
MACHINE

JUNCTION BOX

CUT LIFT TUBE FLUSH  
WITH BLOCK

## STD 2 DOOR OR AIR VAC VAULT READY INSTALLED



- Run wiring up front channel to either control box or top depending on type of unit.
- Mount unit to concrete.
- Attach vault tube cover (not shown)

VACUUM OR AIR VACCUM

INCOMING  
POWER



## 8685-3100A-3 INSTALLATION

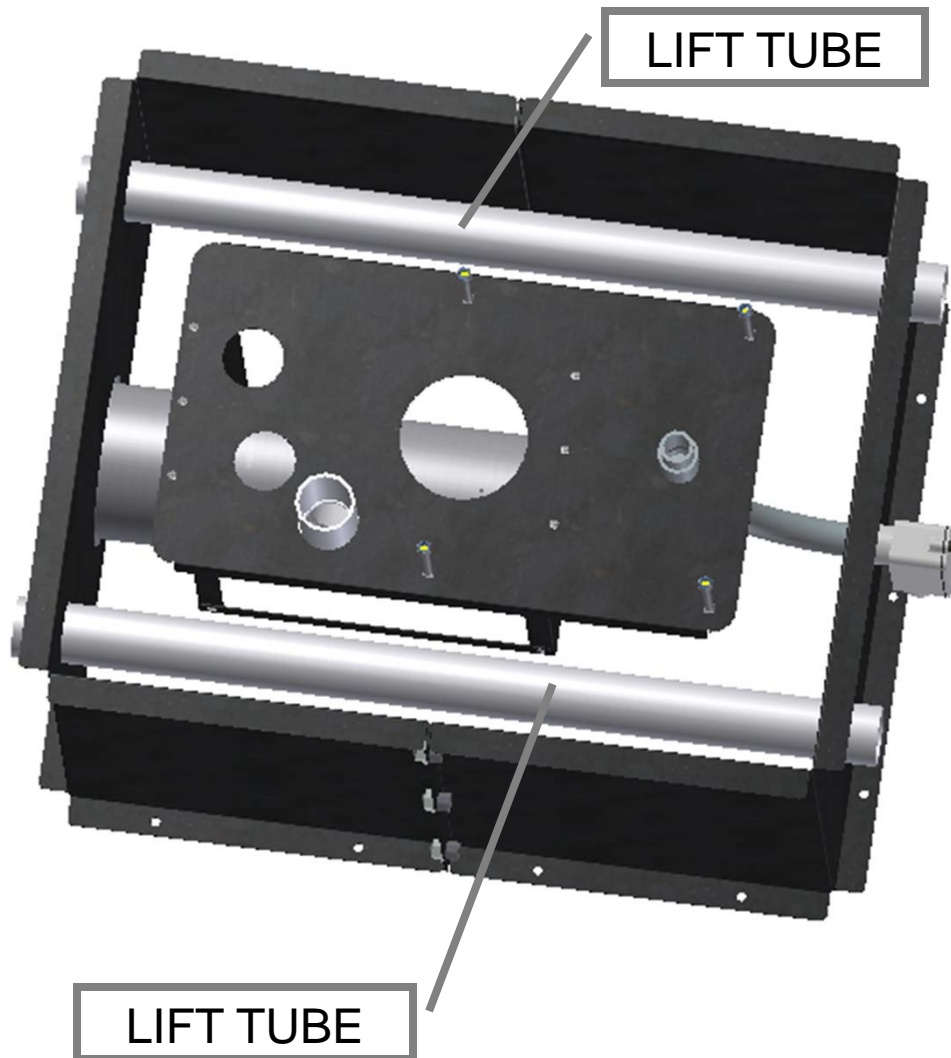


- Insert vault assembly into form.
- Place opening of vault over plug and press until it mates with form and tighten wing nut on front of form until the vault assembly is sealed and no movement is allowed.
- Insert 90 deg electrical conduit into hole in back side of form.

ELECTICAL CONDUIT

8685-3100A-3 VAULT  
ASSEMBLY

### 8685-3100A-3 INSTALLATION



- Insert lift tubes into holes in form. Make sure there is approximately 2" sticking out each end.

- At this point it is recommended to coat the inside of the form with a light coat of oil. This will aid in keeping the form from sticking to the concrete and allow it to be removed easier.

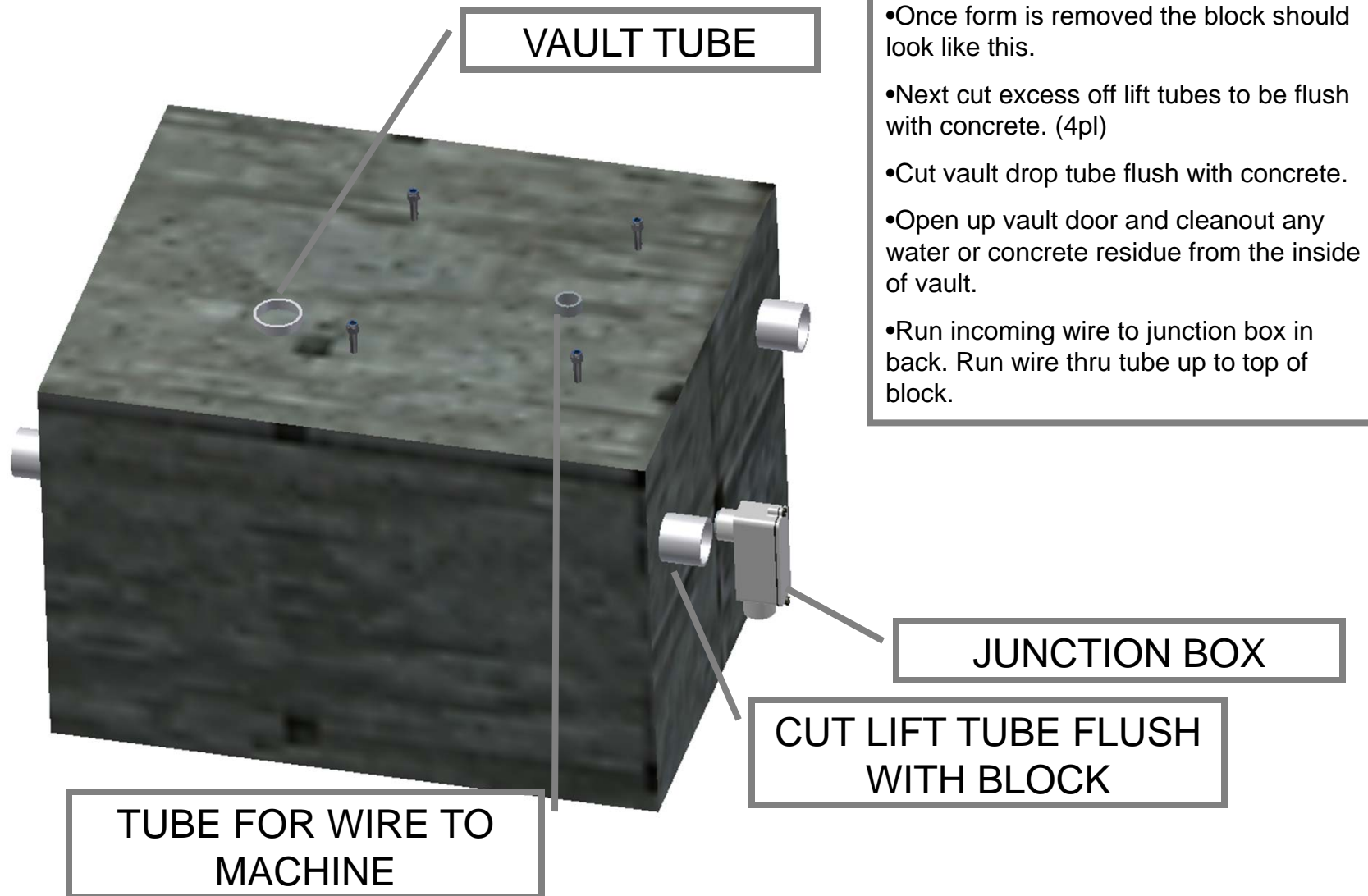
- Duck tape or close up electrical and vault drop on top plate to prevent concrete from entering.

- Form is now ready for concrete. It is recommend using a highway grade mix for best results.

- Next pour in concrete and make sure to fill all the crevices with mix. A concrete vibe may also be used to make sure the mix spreads evenly. Do not over vibe or concrete may become to thin.

- Wait 24-48 hours to dry. When dry remove screws from deck and remove bolts from form. Loosen wing nut on front and slide panels off concrete block. Save forms for another pour.

## 8685 Vault Installation Instructions



## 29K SERIES VAULT READY INSTALLED

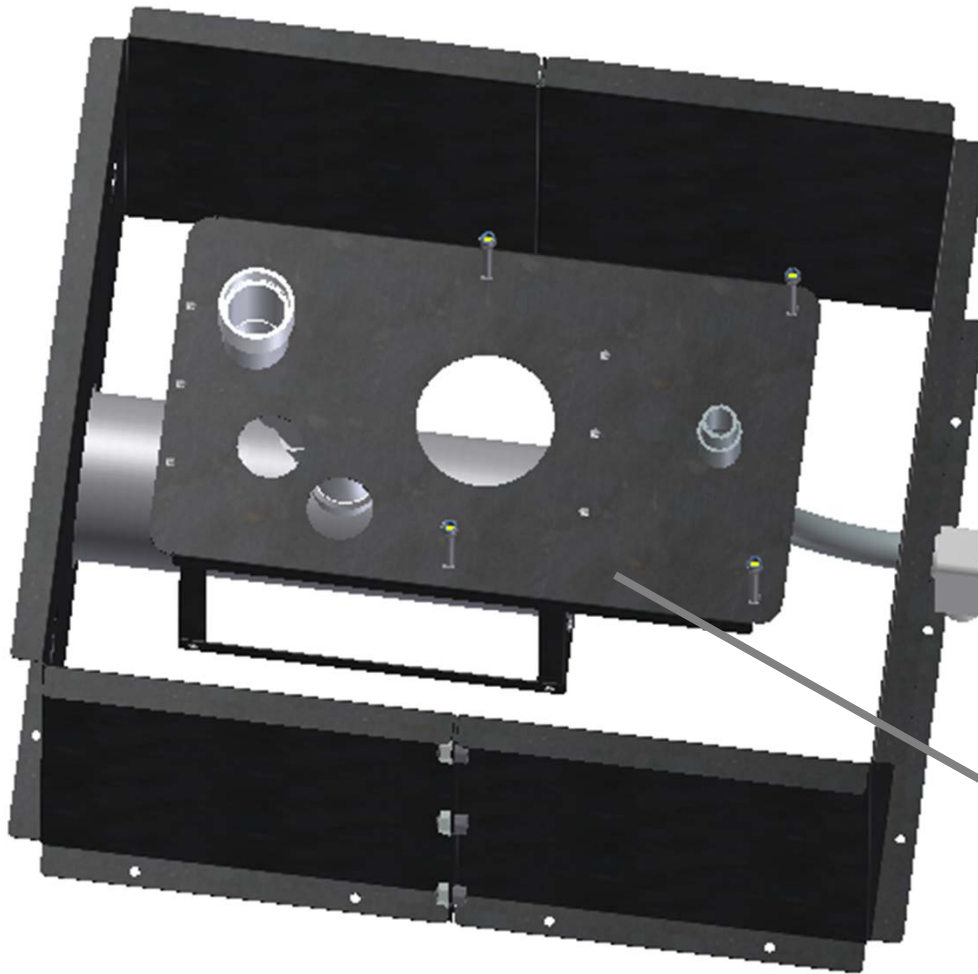


- Attach incoming wire to wiring located underneath unit.
- Mount unit to concrete.

29K SERIES UNIT

INCOMING POWER

## 8685-3100A-4 INSTALLATION

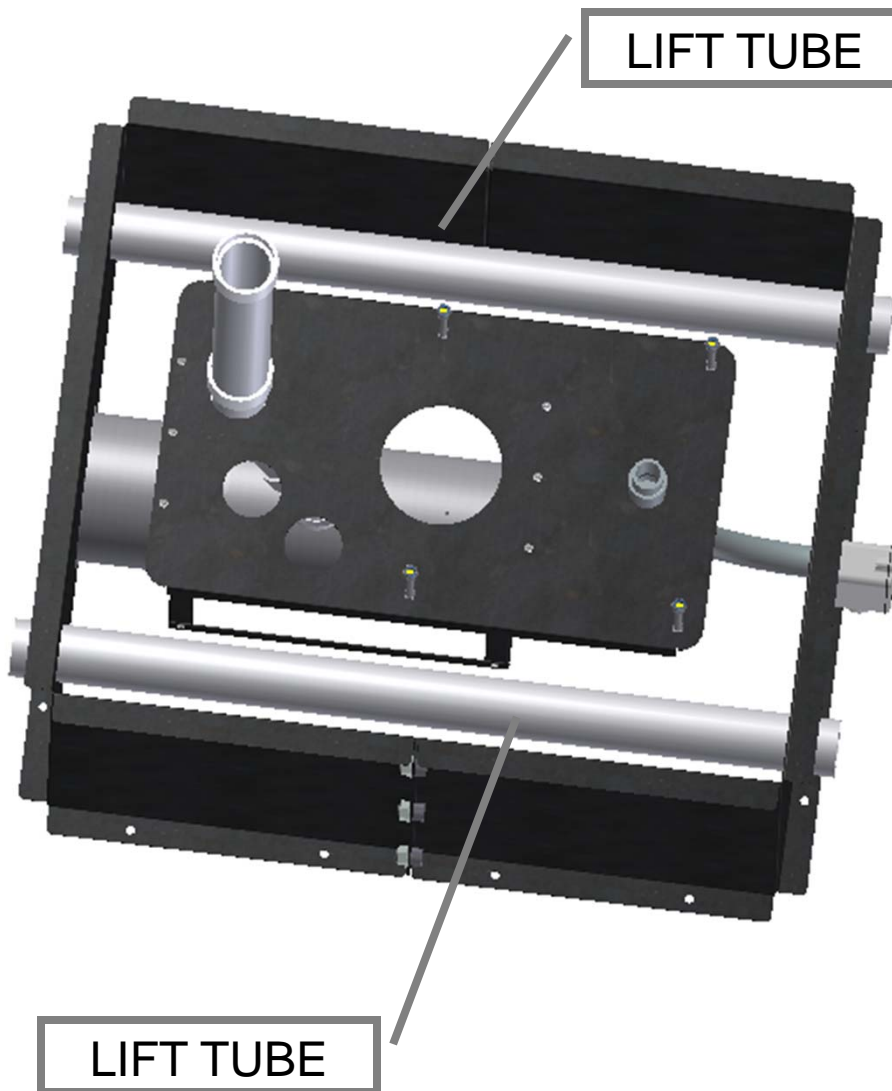


- Insert vault assembly into form.
- Place opening of vault over plug and press until it mates with form and tighten wing nut on front of form until the vault assembly is sealed and no movement is allowed.
- Insert 90 deg electrical conduit into hole in back side of form.

ELECTICAL CONDUIT

8685-3100A-3 VAULT  
ASSEMBLY

## 8685-3100A-4 INSTALLATION



- Insert lift tubes into holes in form. Make sure there is approximately 2" sticking out each end.

- At this point it is recommended to coat the inside of the form with a light coat of oil. This will aid in keeping the form from sticking to the concrete and allow it to be removed easier.

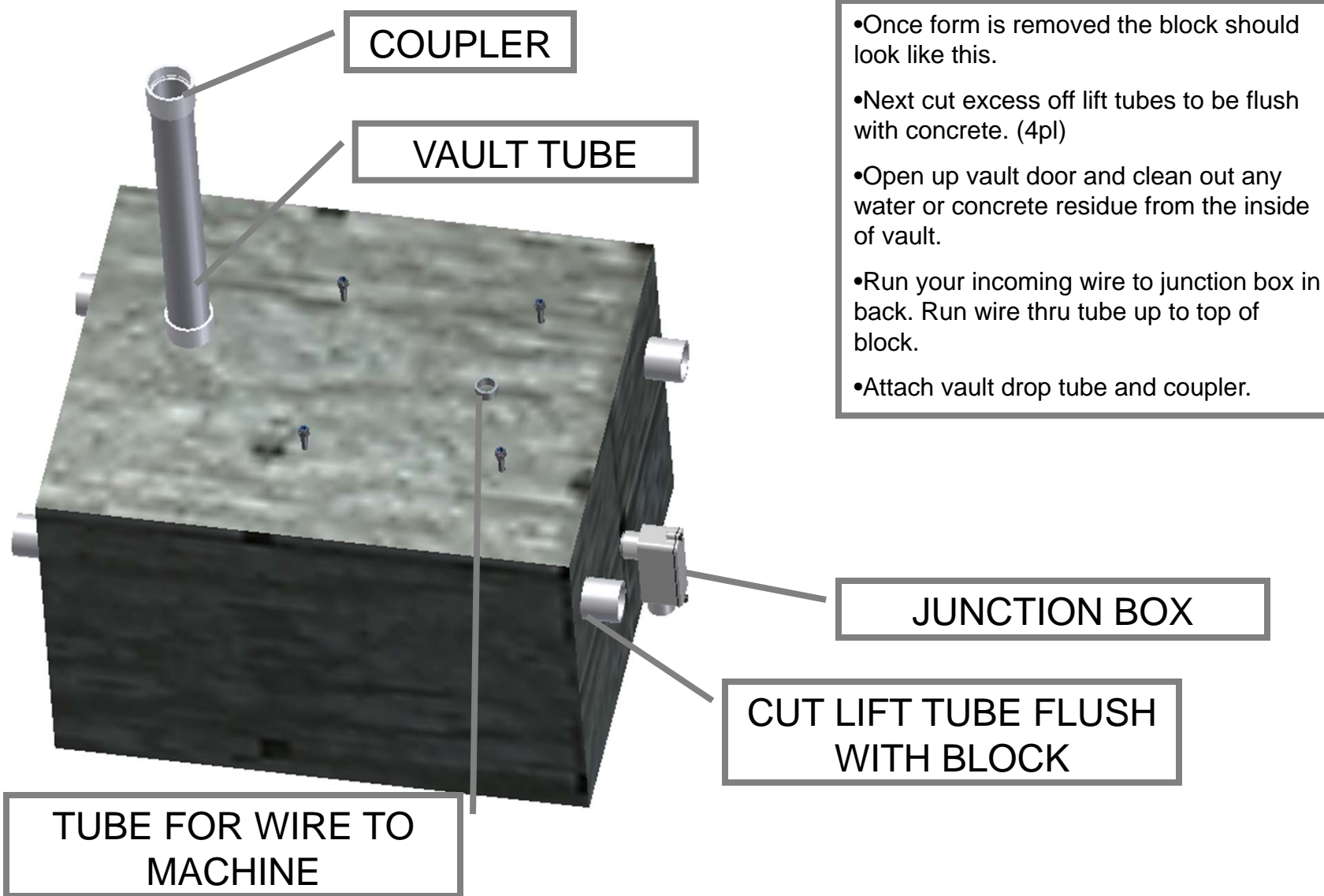
- Duck tape or close up electrical and vault drop on top plate to prevent concrete from entering.

- Form is now ready for concrete. It is recommend using a highway grade mix for best results.

- Next pour in concrete and make sure to fill all the crevices with mix. A concrete vibe may also be used to make sure the mix spreads evenly. Do not over vibe or concrete may become to thin.

- Wait 24-48 hours to dry. When dry remove screws from deck and remove bolts from form. Loosen wing nut on front and slide panels off concrete block. Save forms for another pour.

## 8685-3100A-4 INSTALLATION



## STD 2 DOOR LONG BOX VAULT READY SERIES INSTALLED



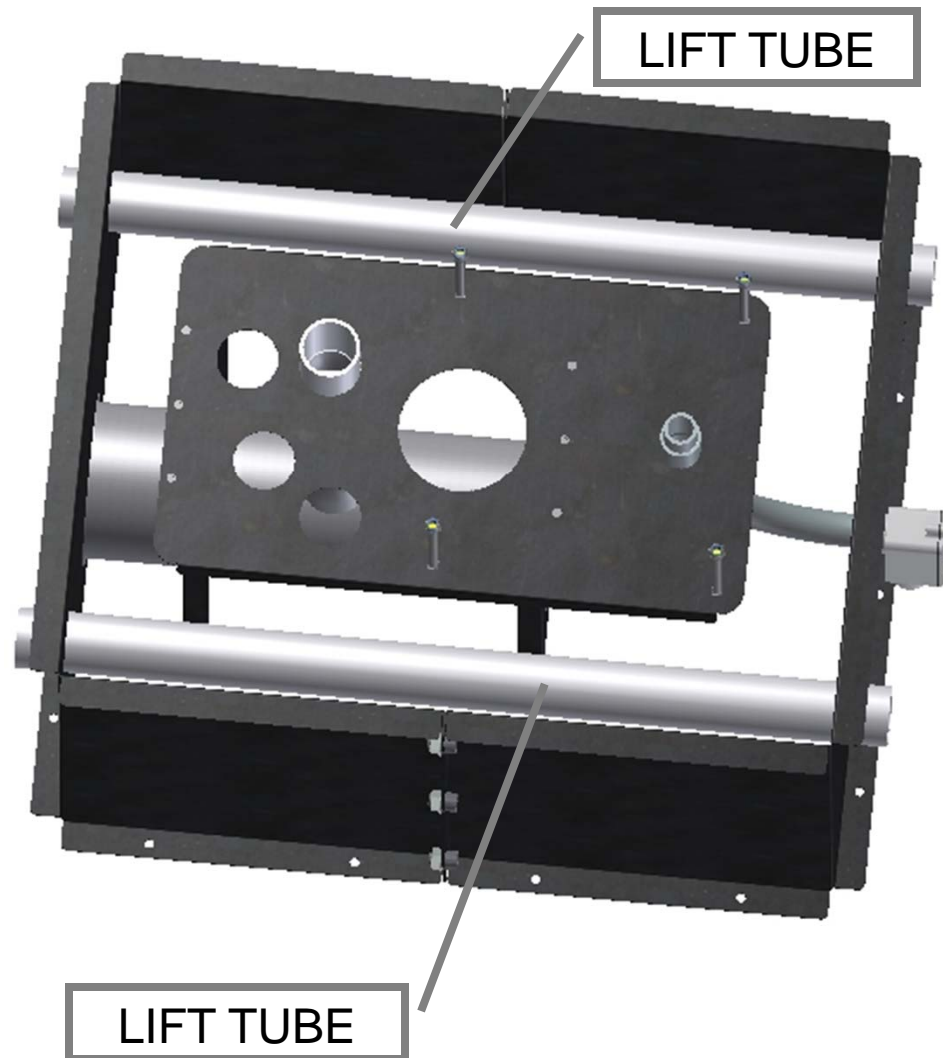
- Run wiring up front channel to either control box or top depending on type of unit.
- Mount unit to concrete.
- Attach vault tube cover (not shown)

VACUUM OR AIR VACCUM

INCOMING  
POWER



## 8685-3100A-6 INSTALLATION



- Insert lift tubes into holes in form. Make sure there is approximately 2" sticking out each end.

- At this point it is recommended to coat the inside of the form with a light coat of oil. This will aid in keeping the form from sticking to the concrete and allow it to be removed easier.

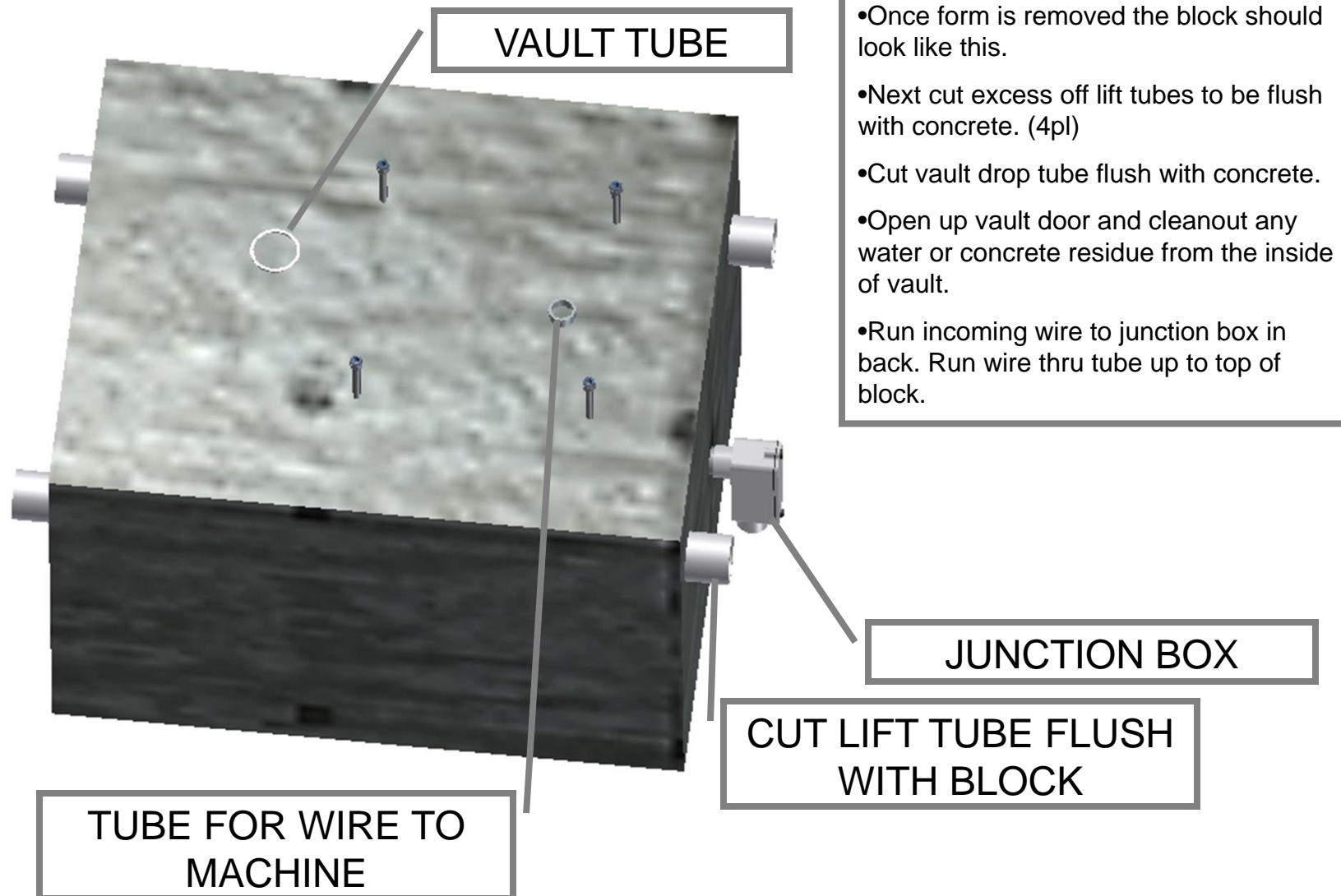
- Duck tape or close up electrical and vault drop on top plate to prevent concrete from entering.

- Form is now ready for concrete. It is recommend using a highway grade mix for best results.

- Next pour in concrete and make sure to fill all the crevices with mix. A concrete vibe may also be used to make sure the mix spreads evenly. Do not over vibe or concrete may become to thin.

- Wait 24-48 hours to dry. When dry remove screws from deck and remove bolts from form. Loosen wing nut on front and slide panels off concrete block. Save forms for another pour.

## 8685 Vault Installation Instructions



## 8900 & 9500 SERIES VAULT READY INSTALLED



- Attach incoming wire to wiring located underneath unit.
- Mount unit to concrete.

8900 SERIES UNIT

INCOMING POWER